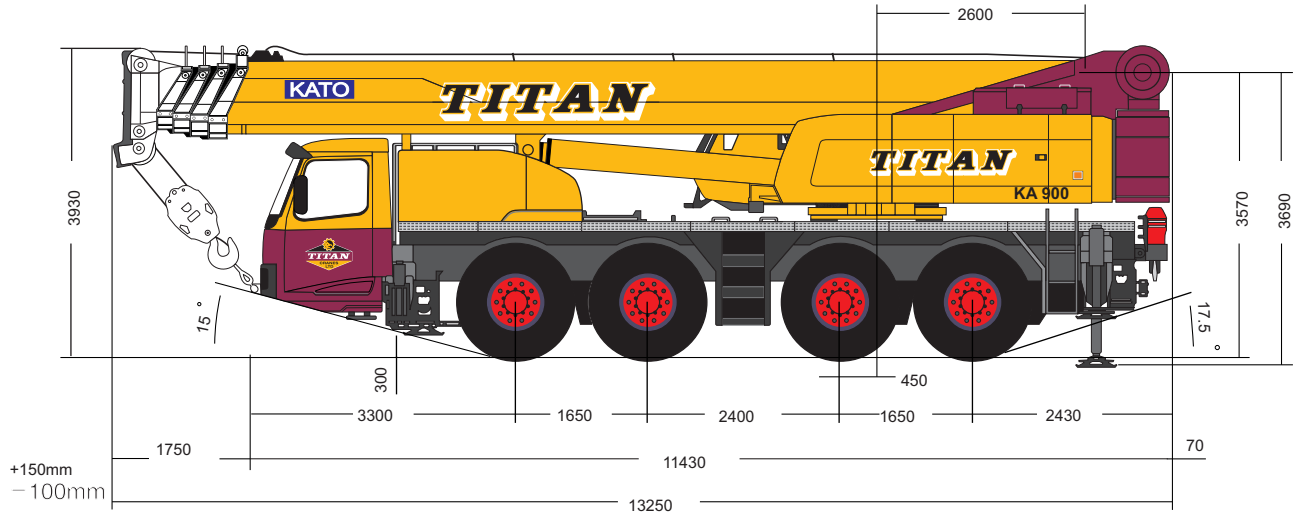
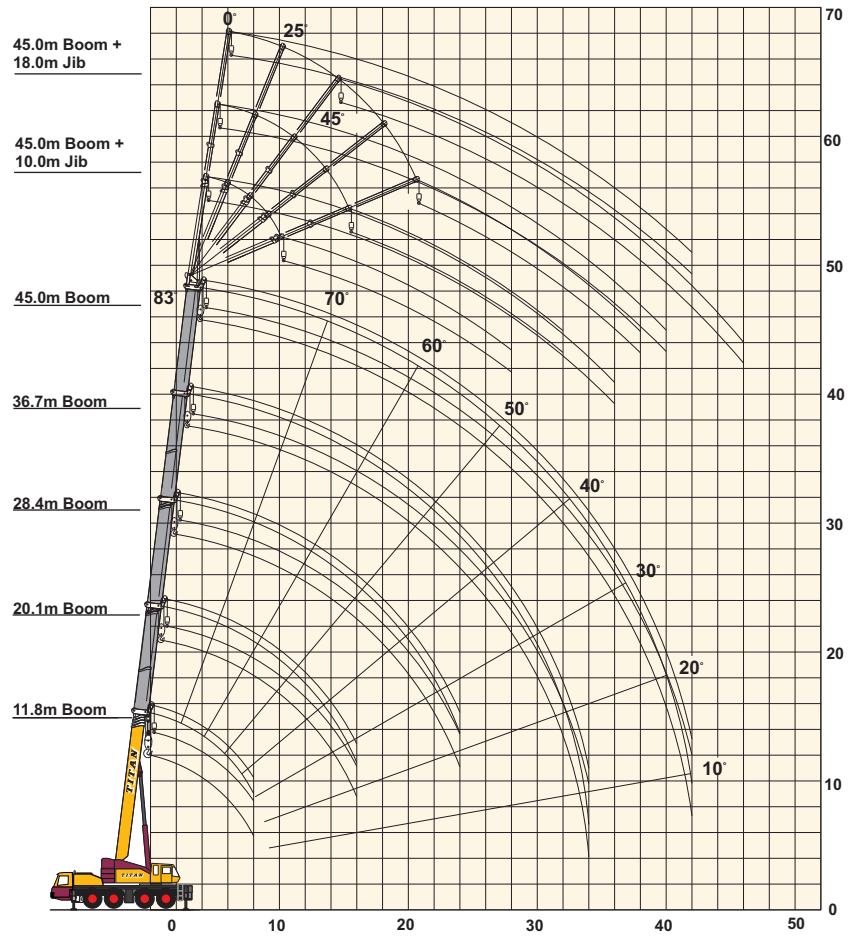
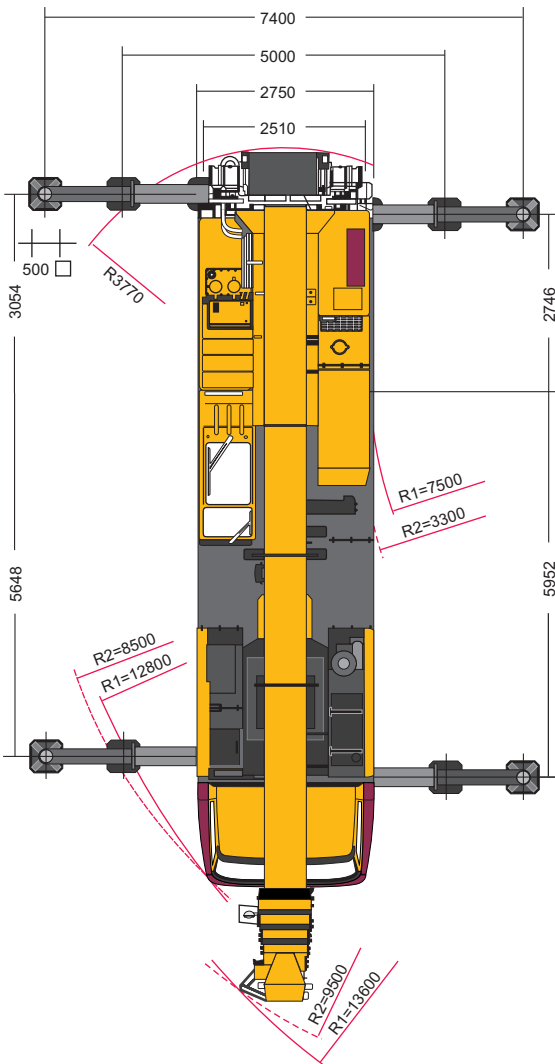


90 TONNE ALL TERRAIN CRANE



GENERAL DIMENSIONS

WORKING RANGE-MAIN BOOM



90 TONNE ALL TERRAIN CRANE

LOAD RATINGS IN TONNES

15 t



OUTRIGGER BASE - 7400 mm DIN 15019.2

Main boom

	11.8m Boom		20.1m Boom	28.4m Boom	36.7m Boom	45.0m Boom
	Over rear		360° full range			
2.8	90.00	82.00	40.00			
3.0	85.00	82.00	40.00	25.00		
3.5	76.00	75.00	40.00	25.00		
4.0	68.00	68.00	40.00	25.00		
4.5	60.00	60.00	40.00	25.00	15.00	
5.0	54.00	54.00	40.00	25.00	15.00	
6.0	43.50	43.50	38.40	25.00	15.00	9.00
7.0	36.50	36.50	34.20	25.00	15.00	9.00
8.0	31.20	31.20	30.90	23.40	15.00	9.00
9.0			26.70	21.00	15.00	9.00
10.0			23.30	19.00	15.00	9.00
11.0			20.20	17.30	15.00	9.00
12.0			17.80	15.80	14.00	9.00
14.0			13.65	13.40	11.90	9.00
16.0			10.80	10.60	10.20	9.00
18.0				8.50	8.90	8.10
20.0				6.75	7.90	7.20
22.0				5.40	6.55	6.40
24.0				4.30	5.45	5.70
26.0					4.50	5.10
28.0					3.75	4.30
30.0					3.05	3.65
32.0					2.50	3.05
34.0					2.00	2.60
36.0						2.15
38.0						1.75
40.0						1.45
42.0						1.15
Standard hook	for 90ton	for 90ton	for 45ton	for 45ton	for 20ton	for 20ton
Hook mass	1000kg	1000kg	430kg	430kg	270kg	270kg
Parts of line	15	15	7	4	3	3
Critical boom angle	—	—	—	—	—	—

90 TONNE ALL TERRAIN CRANE

LOAD RATINGS IN TONNES

10 t


OUTRIGGER BASE - 7400 mm DIN 15019.2

Main boom

	11.8m Boom		20.1m Boom	28.4m Boom	36.7m Boom	45.0m Boom
	Over rear		360° full range			
2.8	90.00	90.00	40.00			
3.0	85.00	85.00	40.00	25.00		
3.5	74.00	74.00	40.00	25.00		
4.0	64.00	64.00	40.00	25.00		
4.5	56.00	56.00	40.00	25.00	15.00	
5.0	50.00	50.00	40.00	25.00	15.00	
6.0	40.50	40.50	38.40	25.00	15.00	9.00
7.0	34.00	34.00	34.00	25.00	15.00	9.00
8.0	28.80	28.80	28.80	23.40	15.00	9.00
9.0			24.80	21.00	15.00	9.00
10.0			20.95	19.00	15.00	9.00
11.0			17.80	16.55	15.00	9.00
12.0			15.30	14.50	14.00	9.00
14.0			11.60	11.35	11.85	9.00
16.0			9.05	8.85	9.65	9.00
18.0				6.85	7.95	8.10
20.0				5.35	6.50	6.85
22.0				4.15	5.25	5.75
24.0				3.15	4.25	4.85
26.0					3.45	4.05
28.0					2.70	3.35
30.0					2.10	2.75
32.0					1.60	2.25
34.0					1.15	1.75
36.0						1.35
38.0						1.00
Standard hook	for 90ton	for 90ton	for 45ton	for 45ton	for 20ton	for 20ton
Hook mass	1000kg	1000kg	430kg	430kg	270kg	270kg
Parts of line	15	15	7	4	3	3
Critical boom angle	—	—	—	—	—	—

90 TONNE ALL TERRAIN CRANE

LOAD RATINGS IN TONNES

15 t



OUTRIGGER BASE - 7400 mm DIN 15019.2

Main boom + 10m jib

Working radius (m)	28.4m Boom						36.7m Boom						45.0m Boom						
	Offset 0°		Offset 25°		Offset 45°		Offset 0°		Offset 25°		Offset 45°		Offset 0°		Offset 25°		Offset 45°		
	Boom angle (°)	Load (ton)	Boom angle (°)	Load (ton)	Boom angle (°)	Load (ton)	Boom angle (°)	Load (ton)	Boom angle (°)	Load (ton)	Boom angle (°)	Load (ton)	Boom angle (°)	Load (ton)	Boom angle (°)	Load (ton)	Boom angle (°)	Load (ton)	
4.0	81.4	6.50																	
5.0	80.1	6.50					82.3	6.50											
6.0	78.8	6.50					81.2	6.50											
7.0	77.3	6.50					80.1	6.50					81.8	4.00					
8.0	75.9	6.50	81.9	5.45			79.0	6.50					80.8	4.00					
9.0	74.4	6.50	80.4	5.20			77.8	6.50					79.9	4.00					
10.0	72.9	6.50	78.8	5.00			76.7	6.50	81.7	5.30			78.9	4.00					
11.0	71.4	6.50	77.3	4.80	81.1	3.75	75.5	6.50	80.5	5.10			78.0	4.00					
12.0	69.9	6.50	75.7	4.65	79.5	3.70	74.4	6.50	79.2	4.95	82.3	3.80	77.0	4.00	81.6	4.00			
14.0	66.8	6.50	72.4	4.35	76.2	3.50	72.0	6.50	76.7	4.65	79.7	3.65	75.1	4.00	79.7	4.00	82.3	3.75	
16.0	63.6	6.15	69.1	4.05	72.7	3.35	69.6	6.50	74.1	4.40	77.0	3.50	73.2	4.00	77.7	4.00	80.3	3.60	
18.0	60.2	5.55	65.7	3.85	69.1	3.25	67.2	6.50	71.5	4.15	74.2	3.40	71.3	4.00	75.7	4.00	78.2	3.50	
20.0	56.6	5.05	62.2	3.65	65.3	3.15	64.6	6.10	68.8	3.95	71.4	3.30	69.4	4.00	73.7	4.00	76.0	3.40	
22.0	52.9	4.65	58.4	3.45	61.3	3.05	61.9	5.65	66.1	3.80	68.6	3.20	67.4	4.00	71.65	3.95	73.8	3.30	
24.0	49.0	4.30	54.4	3.30	56.9	3.00	59.2	5.20	63.2	3.60	65.6	3.10	65.3	4.00	69.4	3.65	71.4	3.20	
26.0	44.8	4.00	50.1	3.15	52.4	2.95	56.2	4.45	60.2	3.45	62.4	3.05	63.2	4.00	67.1	3.40	69.0	3.00	
28.0	40.2	3.35	45.4	3.05			52.9	3.70	57.2	3.35	59.1	3.00	60.8	3.65	64.6	3.15	66.5	2.85	
30.0	34.8	2.70	40.2	2.95			49.4	3.10	53.9	3.25	55.7	2.95	58.3	3.20	62.1	2.95	63.8	2.65	
32.0	28.8	2.15	33.7	2.40			45.7	2.50	50.4	2.90	52.1	2.95	55.6	2.70	59.4	2.75	61.0	2.50	
34.0	21.3	1.65					41.8	2.00	46.4	2.35			52.8	2.20	56.7	2.55	58.2	2.40	
36.0							37.7	1.60	42.0	1.90			49.8	1.80	53.8	2.20	55.1	2.25	
38.0							33.2	1.20	37.0	1.45			46.6	1.45	50.5	1.80	52.0	1.90	
40.0							27.7	0.85	31.1	1.05			43.4	1.10	47.1	1.40			
42.0													40.0	0.80	43.4	1.05			
44.0															39.5	0.75			
Standard hook									for 6.5ton										
Hook mass									150kg										
Parts of line									1										
Critical boom angle			27°		47°		20°		27°		47°		35°		35°		47°		

90 TONNE ALL TERRAIN CRANE

LOAD RATINGS IN TONNES

15 t



OUTRIGGER BASE - 7400 mm DIN 15019.2

Main boom + 18m jib

Working radius (m)	28.4m Boom						36.7m Boom						45.0m Boom						
	Offset 0°		Offset 25°		Offset 45°		Offset 0°		Offset 25°		Offset 45°		Offset 0°		Offset 25°		Offset 45°		
	Boom angle (°)	Load (ton)	Boom angle (°)	Load (ton)	Boom angle (°)	Load (ton)	Boom angle (°)	Load (ton)	Boom angle (°)	Load (ton)	Boom angle (°)	Load (ton)	Boom angle (°)	Load (ton)	Boom angle (°)	Load (ton)	Boom angle (°)	Load (ton)	
5.0	82.2	5.50																	
6.0	81.1	5.50																	
7.0	79.9	5.50					81.8	4.00											
8.0	78.8	5.50					80.9	4.00				82.3	2.60						
9.0	77.7	5.50					80.0	4.00				81.5	2.60						
10.0	76.5	5.50					79.0	4.00				80.8	2.60						
11.0	75.4	5.10					78.1	4.00				80.0	2.60						
12.0	74.1	4.75					77.1	4.00				79.2	2.60						
14.0	71.5	4.20	80.3	2.30			75.2	4.00				77.5	2.60						
16.0	69.0	3.70	77.6	2.15			73.3	4.00	80.4	2.30		76.0	2.60						
18.0	66.4	3.30	74.9	2.00	80.8	1.55	71.3	3.95	78.2	2.15		74.3	2.60	80.8	2.25				
20.0	63.7	2.95	72.2	1.90	77.9	1.50	69.1	3.50	75.9	2.05	80.7	1.55	72.6	2.60	79.0	2.15			
22.0	61.0	2.65	69.3	1.80	74.9	1.45	66.8	3.20	73.7	1.90	78.3	1.50	70.9	2.60	77.0	2.05	80.9	1.50	
24.0	58.0	2.40	66.3	1.70	71.6	1.40	64.6	2.95	71.3	1.85	75.8	1.45	69.2	2.60	75.1	1.95	78.9	1.50	
26.0	55.0	2.20	63.2	1.60	68.3	1.35	62.3	2.70	68.9	1.75	73.2	1.40	67.5	2.60	73.2	1.85	76.8	1.45	
28.0	51.9	2.05	60.0	1.55	64.7	1.35	59.8	2.50	66.4	1.65	70.6	1.35	65.7	2.60	71.2	1.80	74.8	1.40	
30.0	48.6	1.90	56.7	1.50	60.8	1.30	57.3	2.30	63.9	1.60	67.8	1.35	63.9	2.60	69.2	1.70	72.6	1.35	
32.0	45.0	1.75	53.1	1.45	56.8	1.30	54.7	2.15	61.2	1.55	65.0	1.30	61.9	2.50	67.1	1.65	70.4	1.35	
34.0	41.3	1.65	49.0	1.40	52.3	1.25	52.1	2.00	58.3	1.50	62.1	1.30	59.8	2.35	64.9	1.60	68.0	1.30	
36.0	37.0	1.55	44.5	1.35			49.3	1.85	55.4	1.45	59.0	1.30	57.6	2.15	62.7	1.55	65.6	1.30	
38.0	32.3	1.45	39.5	1.30			46.3	1.75	52.3	1.40	55.5	1.25	55.3	2.00	60.4	1.50	63.2	1.30	
40.0	26.7	1.35	33.2	1.25			43.1	1.60	49.0	1.35	51.7	1.25	53.0	1.65	58.0	1.45	60.6	1.25	
42.0	19.9	1.15					39.6	1.30	45.6	1.30			50.2	1.35	55.6	1.40	57.8	1.25	
44.0							35.7	1.00	41.8	1.30			47.4	1.10	52.9	1.40	54.8	1.25	
46.0							31.4	0.75	37.1	1.05			44.5	0.85	50.3	1.25	51.6	1.25	
48.0									31.5	0.75					47.1	1.00			
50.0															43.5	0.75			
Standard hook									for 6.5ton										
Hook mass									150kg										
Parts of line									1										
Critical boom angle	—		27°		47°		25°		27°		47°		40°		40°		47°		