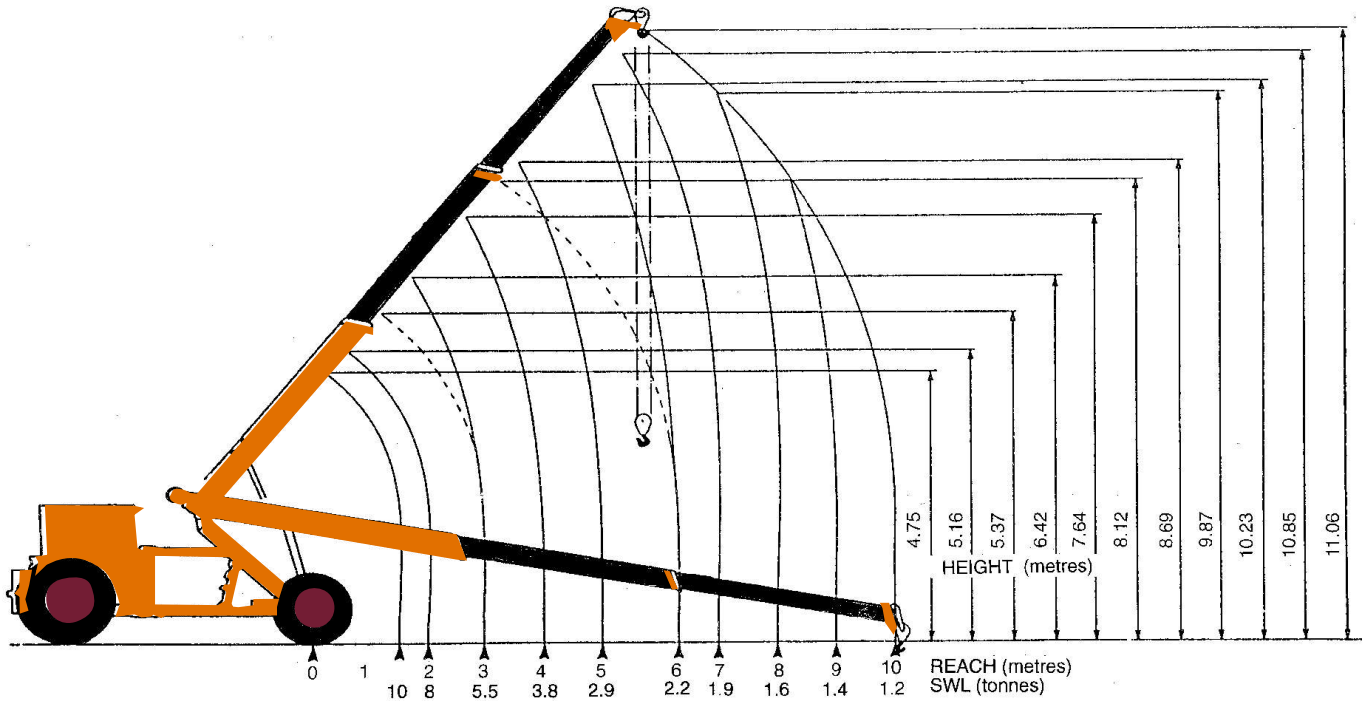


HAMILTON

10 Tonne Capacity Crane



LIFTING CAPACITY

10 tonnes @ 1.5m max.
1.2 tonnes @ 10.0m max.

OPERATING SPEEDS

Luffing time to 50 degrees — 21 seconds
Slewing time (lock to lock) — 6 seconds
Telescoping time to 10m — 36 seconds

BOOM

Hydraulic two-stage synchronised extensions

TURNING CIRCLE

Radius over outside wheels — 5.2m

SLEW ANGLE

55 degrees either side of centre

JIB DEVIATION

Stationary — 38 degrees giving sideways load shift of 6.51m
Mobile — 55 degrees giving sideways load shift of 19.66m

CAB

Ventilation unit
Tinted armour plate glass
Opening side and rear windows
Skylight
Additional personnel seat

PRIME MOVER

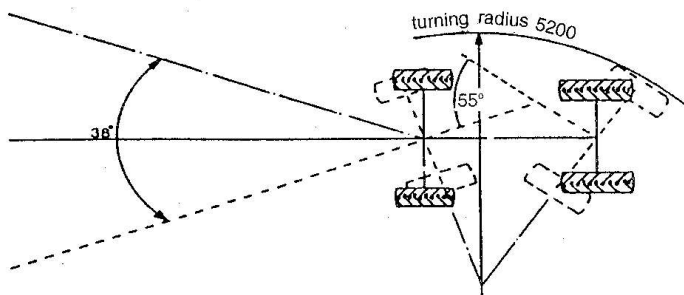
Ford — Model 6610
Engine — 4 cylinder diesel 64Kw (86hp) at 2100 rpm (BS)
Max. torque — 313.9Nm (231lb.ft) at 1600rpm (BS)
Maximum road speed — 42kph

UNLADEN WEIGHTS

Tare weight — 11.4 tonnes
Front axle — 4.3 tonnes
Rear axle — 7.1 tonnes

BOOM OPTION

Winch



DIMENSIONS

Maximum Reach — 10.0m
Maximum Height — 12.0m
Height Overall (boom horizontal) — 2.80m
Length Overall (boom retracted) — 8.0m
Width Overall — 2.49m
Ground Clearance — 0.4m
Wheel Base — 4.01m