

RATED LIFTING CAPACITIES

Hook Deduct 350kgs

Outriggers fully extended 6.1 m							
Front jack extended (360°)							
Front jack not extended (over sides and rear)							
A \ B	10.5 m	14.2 m	18.0 m	21.7 m	25.5 m	29.2 m	33.0 m
3.0 m	30,000	20,000	16,000				
3.5 m	25,400	20,000	16,000	12,000			
4.0 m	22,900	20,000	16,000	12,000	11,500		
4.5 m	21,000	20,000	16,000	12,000	11,500		
5.0 m	19,400	18,400	16,000	12,000	11,500	9,000	
5.5 m	17,700	16,800	14,750	12,000	11,500	9,000	7,000
6.0 m	16,200	15,300	13,700	12,000	11,500	9,000	7,000
7.0 m	13,700	12,650	11,950	11,000	10,000	9,000	7,000
8.0 m	11,400	11,000	10,550	10,200	8,900	8,200	7,000
9.0 m		9,000	9,000	9,200	8,050	7,450	6,250
10.0 m		7,300	7,300	7,700	7,300	6,750	5,700
12.0 m		5,050	5,050	5,450	5,700	5,650	4,800
14.0 m			3,600	4,000	4,250	4,400	4,100
16.0 m			2,550	2,950	3,200	3,400	3,450
18.0 m				2,200	2,450	2,650	2,800
20.0 m				1,550	1,850	2,050	2,200
22.0 m					1,350	1,550	1,750
24.0 m						1,200	1,350
26.0 m						850	1,000
28.0 m							700
30.0 m							500

30T Hook; 280kgs

Outriggers fully extended 6.1 m						
Front jack extended (360°)						
Front jack not extended (over sides and rear)						
E \ C \ D				14.5 m Jib		
	5°	25°	45°	5°	25°	45°
80°	3,000	1,700	1,000	2,000	900	600
77°	3,000	1,700	1,000	2,000	900	600
76°	3,000	1,700	1,000	1,850	900	600
75°	3,000	1,670	960	1,740	870	570
70°	2,200	1,440	860	1,350	800	530
65°	1,750	1,250	800	1,100	720	490
60°	1,400	1,100	750	900	640	460
55°	1,100	950	700	730	560	430
50°	700	650	600	550	450	400
46°	450	450	400	350	300	250
45°	400	400	350	300	250	
42°	250	250				

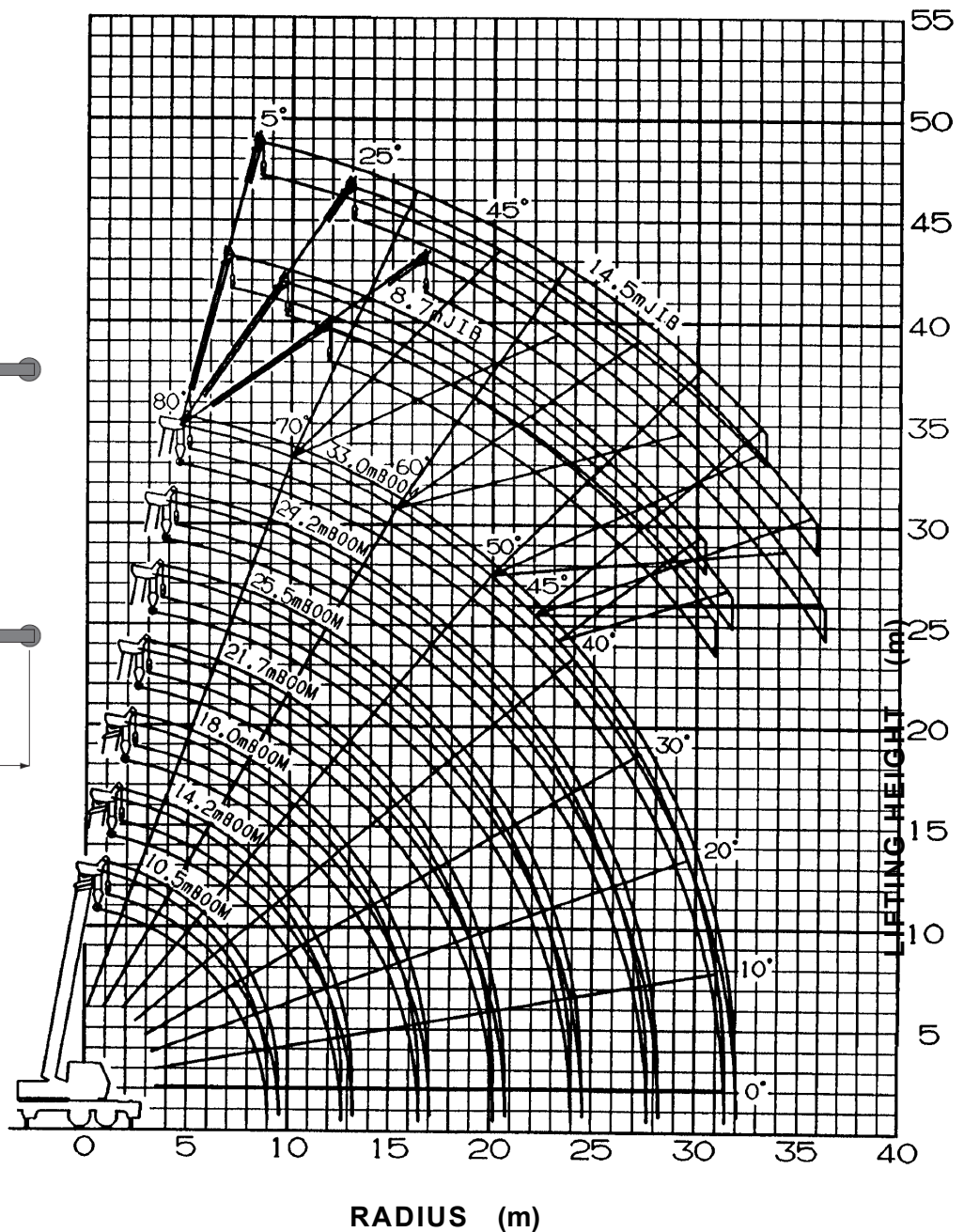
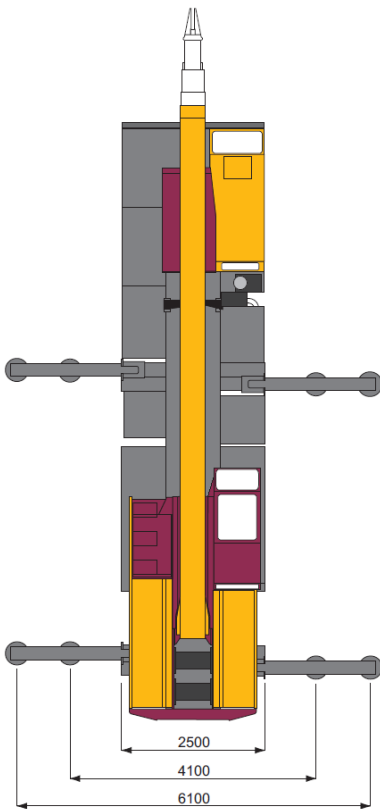
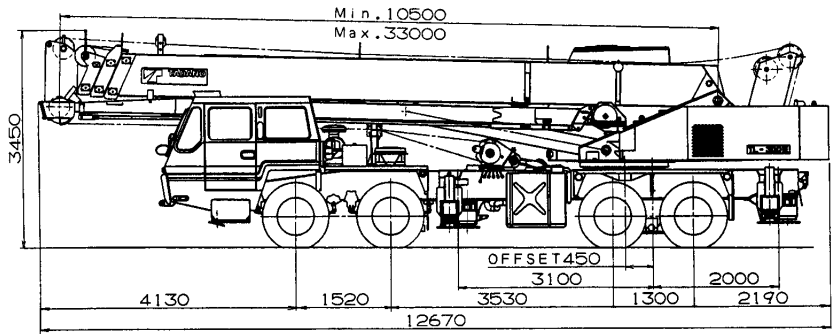
A : Boom length
 B : Load radius
 C : Jib length
 D : Jib offset
 E : Boom angle

3.4T Hook; 70kg

Unit: kg

DIMENSION

Overall width..... 2,490 mm
Tail swing radius..... 3,350 mm



NOTE : The above lifting heights and boom angles are based on a straight (unladen) boom, and allowance should be made for boom deflection obtained under laden conditions.

SPEC. SHEET No. TL-300E-3-00107/EX-140
DATE July, 2006