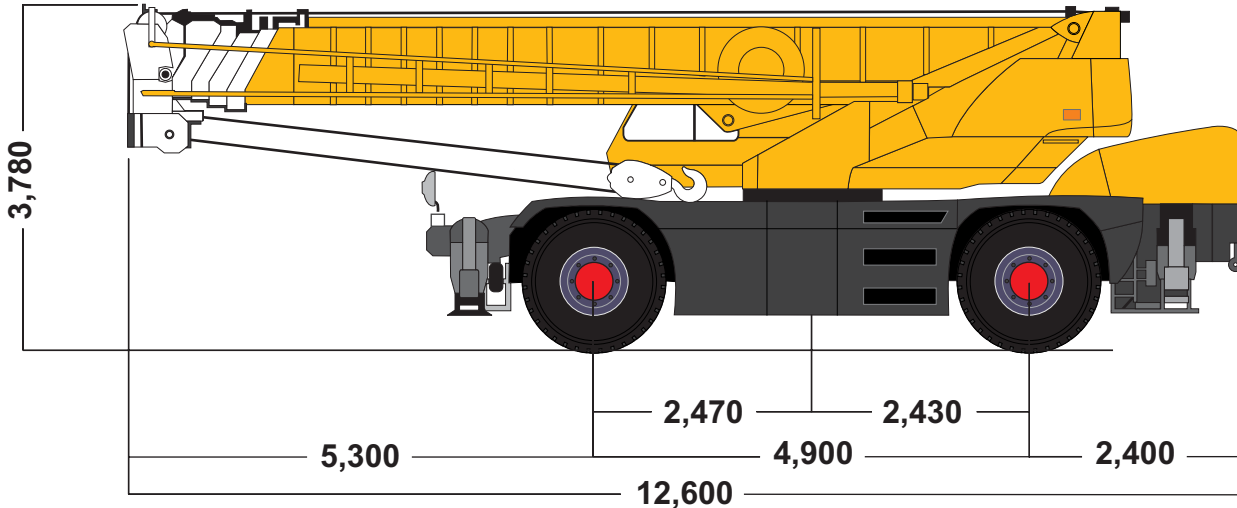
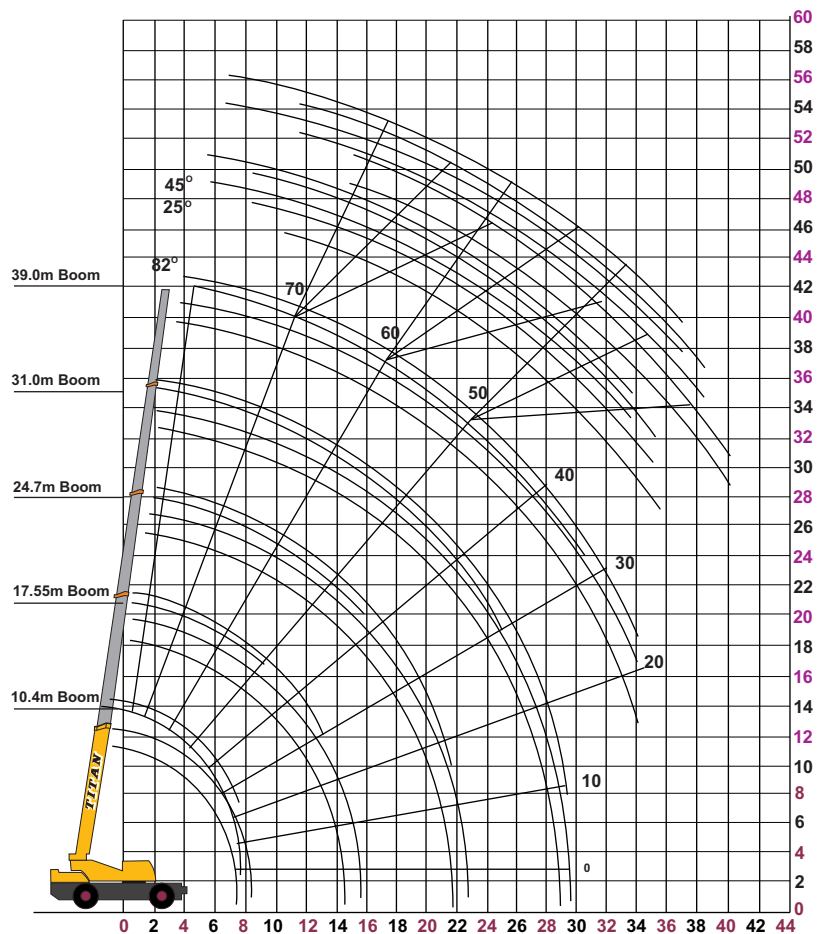
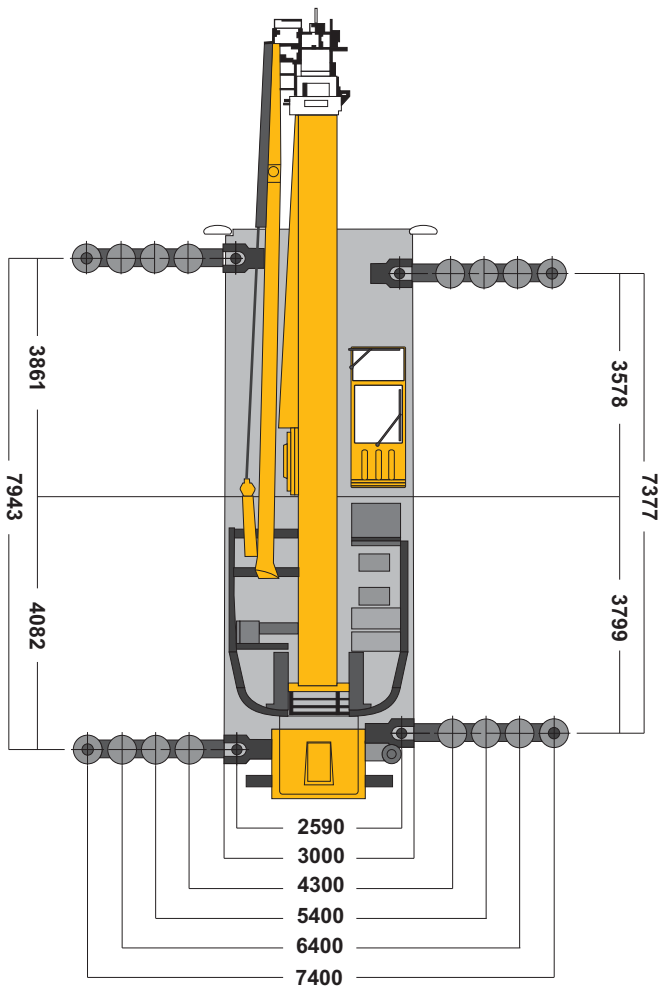


## 50 TONNE ROUGH TERRAIN CRANE



GENERAL DIMENSIONS

WORKING RANGE - MAIN BOOM



### LOAD RATINGS IN TONNES

360

BS 1757

#### MAIN BOOM RATED LOADS

Work Radius (m)	(7.3m)				
	Outriggers Fully Extended (Full Radius)				
	10.4m Boom	17.55m Boom	24.7m Boom	31.85m Boom	39.0m Boom
3.0	50.00	28.00	20.00	14.00	
3.2	45.00	28.00	20.00	14.00	
3.5	41.00	28.00	20.00	14.00	
4.0	37.00	28.00	20.00	14.00	7.60
4.5	33.50	28.00	20.00	14.00	7.60
5.0	30.20	28.00	20.00	14.00	7.60
5.5	27.50	26.10	20.00	14.00	7.60
6.0	25.00	24.40	20.00	14.00	7.60
6.5	22.70	22.40	18.70	14.00	7.60
7.0	20.70	20.60	17.60	13.50	7.60
7.5		18.90	16.60	13.00	7.60
8.0		17.50	15.60	12.50	7.60
8.5		16.20	14.70	11.90	7.60
9.0		15.00	13.90	11.30	7.60
10.0		13.00	12.30	10.30	7.60
11.0		11.00	10.90	9.40	7.10
12.0		9.30	9.20	8.65	6.60
13.0		7.90	7.75	8.00	6.15
14.0		6.75	6.60	7.40	5.75
15.0			5.65	6.50	5.35
16.0			4.90	5.70	5.00
18.0			3.50	4.40	4.40
20.0			2.50	3.35	3.90
21.0			2.05	2.95	3.50
22.0				2.55	3.10
24.0				1.85	2.40
26.0				1.30	1.85
28.0				0.90	1.35
30.0					0.95
32.0					0.65
33.0					0.50
Critical Boom Angle	-	-	-	-	-

360°

BS 1757

39.0m Boom + 9.0m Fly Jib						
Boom Angle (°)	(7.3m)					
	Outriggers Fully Extended (Full Radius)					
	Offset 5°		Offset 25°		Offset 45°	
	Work Radius (m)	Load (ton)	Work Radius (m)	Load (ton)	Work Radius (m)	Load (ton)
82.0	6.0	3.50	10.0	2.40	11.0	1.60
77.0	11.5	3.50	14.0	2.40	15.8	1.60
75.0	13.0	3.50	15.6	2.30	17.5	1.60
73.0	14.7	3.15	17.2	2.15	18.8	1.55
70.0	17.0	2.75	19.5	1.95	21.0	1.50
66.0	20.1	2.30	22.4	1.70	23.7	1.45
64.0	21.6	2.15	23.8	1.60	25.0	1.40
60.0	24.7	1.85	26.6	1.45	27.5	1.30
57.0	26.7	1.70	28.5	1.35	29.3	1.25
55.0	28.0	1.40	29.7	1.30	30.5	1.20
52.0	30.0	1.00	31.5	0.95	32.1	0.90
50.0	31.1	0.80	32.6	0.75	33.1	0.75
45.0	33.8	0.40	35.1	0.40	35.4	0.40
Critical Boom Angle	42°		42°		42°	

39.0m Boom + 14.5m Fly Jib						
Boom Angle (°)	(7.3m)					
	Outriggers Fully Extended (Full Radius)					
	Offset 5°		Offset 25°		Offset 45°	
	Work Radius (m)	Load (ton)	Work Radius (m)	Load (ton)	Work Radius (m)	Load (ton)
82.0	9.0	2.40	14.0	1.25	17.0	0.80
78.0	12.5	2.40	16.6	1.25	19.6	0.80
77.0	13.5	2.30	17.5	1.25	20.4	0.80
75.0	15.4	2.10	19.3	1.20	22.0	0.80
73.0	17.1	1.95	21.0	1.15	23.5	0.79
70.0	19.7	1.75	23.6	1.08	25.8	0.78
65.0	24.1	1.45	27.6	1.00	29.4	0.75
60.0	28.1	1.25	31.2	0.90	32.7	0.73
55.0	31.8	1.15	34.6	0.83	35.8	0.71
52.0	33.8	0.80	36.5	0.80	37.5	0.70
50.0	35.1	0.65	37.7	0.60	38.5	0.55
47.0	37.0	0.40	39.3	0.40	40.0	0.40
Critical Boom Angle	44°		44°		44°	

OTHER RATINGS AVAILABLE ON REQUEST