

**AT40**

40 Tonne

PICK AND CARRY CRANE

# AT40

**PICK AND CARRY**



MAXIMUM CAPACITY  
**40t**



MAXIMUM BOOM LENGTH  
**19.8m**



MAXIMUM HOOK HEIGHT  
**19m**

## OVERVIEW

The AT 40 is the largest pick and carry crane in the Franna product range and has been specifically designed for higher capacity lifting applications, boasting 44% more load moment capacity than the Franna MAC 25. The 3-axle design eliminates the need for a removable counterweight and the third axle control system raises axle 3 when operating on a work site to provide a smooth turning circle.



### KEY FEATURES AND BENEFITS:

- ▶ 40 tonne at 1.1m radius on lug
- ▶ 35 tonne at 2.0m radius on 8 part hook block
- ▶ 20 tonne on machinery (Rhino) hook
- ▶ 19m maximum hook height
- ▶ Single line pull 4.3 tonne
- ▶ Dynamic LMI (patent protected)
- ▶ Designed to AS1418.5 (2013)
- ▶ Full width isolated cabin ensures excellent visibility
- ▶ Automatic 4WD engages when a loss of traction is detected
- ▶ High strength boom with easy maintenance
- ▶ Hydro-pneumatic suspension enhances roadability
- ▶ Turret counterweight for greater articulated lifting capacity

## TECHNICAL DESCRIPTION

### 01. Boom

Maximum boom length	19.8m
Maximum hook height Boom elevation angle range	19.0m -5°/60°
Articulation	35° R / 35° L
Fixed lug Machinery hook (rhino)	40 tonne 20 tonne

### 02. Winch

Maximum line pull	4.3 tonne
Two speed winch	38 m/min / 76 m/min
7 Part Hook block	30 tonne maximum rated capacity
Optional 8 Part Hook block	35 tonne maximum rated capacity

### 03. Engine & Transmission

	Mercedes OM 906
Standard engine power	205kW
Engine torque	1100 Nm
Fuel Type	Diesel
Fuel Capacity	500 litre
Transmission case	Allison 6 speed ZF 2:1 Ratio

### 04. Hydraulic System

Axial piston pump	135cc/rev
Maximum pump flow rate	300 litre/min
Maximum working pressure	350 bar
Hydraulic tank capacity	500 litre

### 05. Chassis

Front Axle (Tare / GVM)	11,100kg / 12,000kg
Axle 2 (Tare / GVM) Axle 3 (Tare / GVM) Axle Total	9,200kg / 10,000kg 9,200kg / 10,000kg
(Tare / GVM) Turning circle (Highway) Turning circle (crane mode)	29,500kg / 32,000kg 10.2m 9.0m

### 06. Brakes & Suspension

Brake System	Air operated disc brakes with ABS
Suspension	Hydro pneumatic suspension

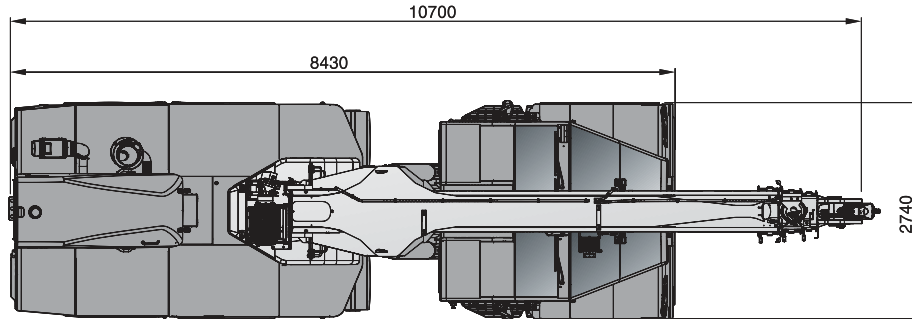
### 07. Vehicle Performance

Maximum rated travel speed	80km/h
Gradeability	39%

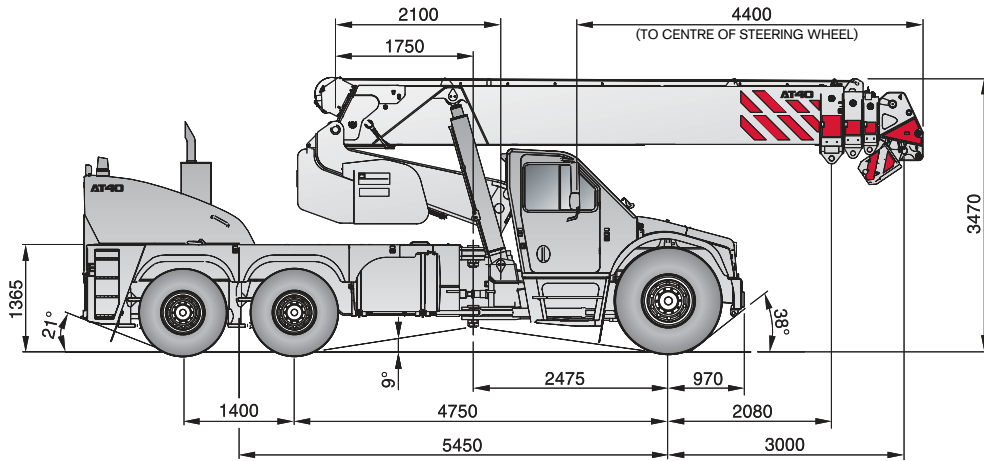


## DIMENSIONS / AREA OF OPERATION

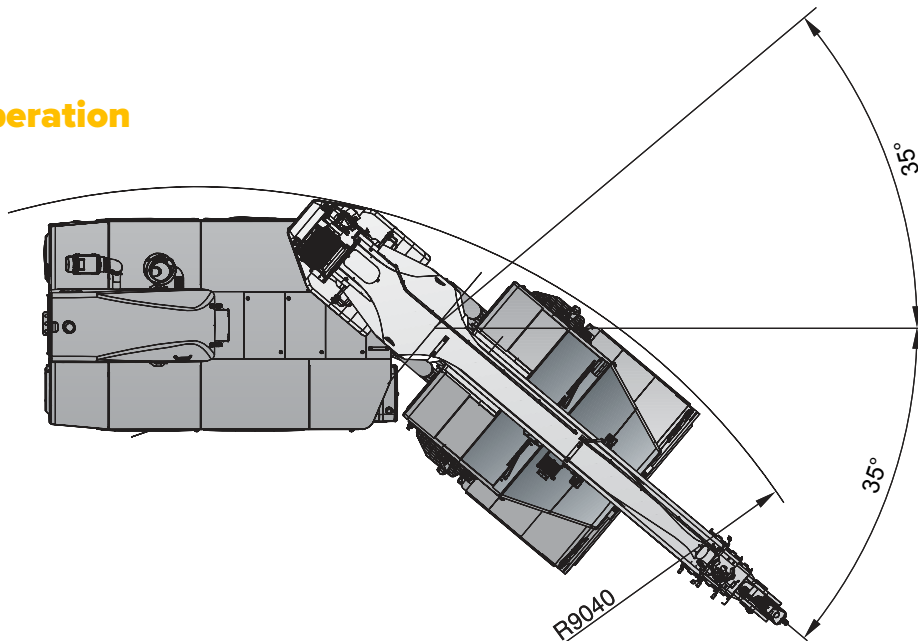
### Plan view



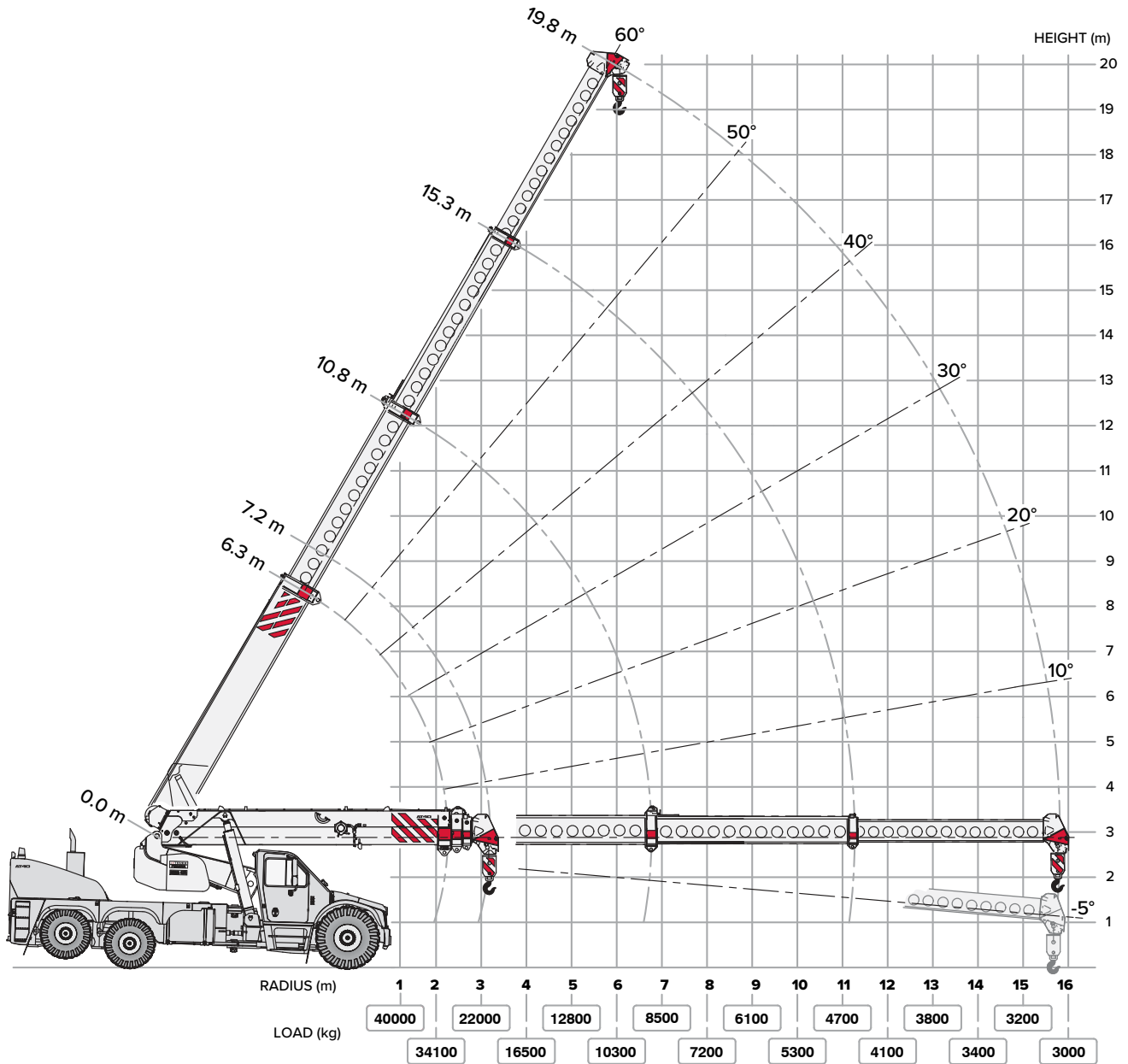
### Right hand view



### Area of operation



## RADIUS LOAD CHART



NOTE: Rated Capacity values shown are for the Pick and Carry Chart.  
The Static Chart will give higher rated capacities.

# LOAD CHART

## RATED CAPACITY CHART STATIC (0 km/hr) - FALL BLOCK

RAD	BOOM LENGTH TO HEAD SHEAVES - 3rd BOOM RETRACTED														3rd BOOM EXTENDING				RAD	
	7.23	7.50	8.00	8.50	9.00	9.50	10.00	10.50	11.00	12.00	13.00	14.00	15.00	16.00	17.00	18.00	19.83	m		
m	kg	kg	kg	kg	kg	kg	kg	kg	kg	kg	kg	kg	kg	kg	kg	kg	kg	kg	m	
1.0	35000	35000	35000	35000	35000	35000													1.0	
	35000	35000	33000	28700	25500	23000														
2.0	47	49	52	55	57	59													2.0	
	34	37	42	46	49	52	54	56	58											
2.5	30200	30300	30300	30400	30100	29600	29100	28600	28200	27400									2.5	
	29400	29500	29500	29600	29300	25500	22600	20400	18500	15700										
	27800	27900	24300	21100	18800	17000	15600	14400	13400	11700										
3.0	25	30	36	41	44	47	50	52	55	58									3.0	
	24700	24800	24800	24900	24900	25000	25000	24800	24500	23800	23200									
	24000	24100	24200	24200	24300	24300	22000	19700	17900	15100	13100									
3.5	22700	22800	22900	19900	17600	15900	14500	13400	12400	10900	9700								3.5	
	11	20	29	35	39	43	46	49	51	55	58									
	23800	21700	20900	21000	21000	21100	21100	21100	21100	21000	20500	20100								
4.0	23200	21100	20400	20400	20500	20500	20500	19300	17400	14700	12700	11200							4.0	
	21900	19900	19200	19300	16800	15000	13600	12600	11700	10200	9100	8200								
	(3.1)	(3.4)	19	28	34	38	42	45	48	52	56	59								
5.0			18600	18000	18100	18100	18200	18200	18200	18200	18200	18000	17600						5.0	
			18100	17500	17600	17600	17700	17700	17100	14300	12300	10900	9700							
			17100	16500	16500	14400	13000	11900	11000	9600	8600	7700	7000							
6.0			(3.9)	19	27	33	37	41	44	49	53	56	59						6.0	
				16200	14400	14000	14000	14100	14100	14100	14100	14200	14200	14200	14200	14200				
				15800	14000	13600	13600	13700	13700	13700	11800	10300	9200	8300	7700					
7.0				14900	13100	12800	12400	11100	10100	8700	7700	6900	6300	5800	5500				7.0	
				(4.4)	(4.9)	18	26	31	36	42	47	51	54	57	59					
						12800	11500	11300	11300	11400	11400	11400	11400	11500	11600	11800				
8.0						12500	11200	11000	11000	11000	11000	10000	8800	7900	7300	6800			8.0	
						11700	10500	10300	9800	8200	7100	6300	5700	5300	5000	4800				
						(5.4)	(5.9)	17	25	34	40	45	49	52	55	58				
9.0								10500	9600	9400	9400	9500	9500	9500	9700	9800	10000		9.0	
								10200	9300	9100	9200	8600	7700	7000	6500	5800				
								9500	8700	8000	6700	5900	5300	4800	4600	4400	4000			
10.0								(6.4)	(6.9)	24	33	39	44	48	51	54	58		10.0	
										8100	8000	8000	8000	8100	8200	8300	8500			
										7800	7700	7700	7800	7500	6900	6300	5600			
11.0										7300	6700	5600	5000	4500	4300	4000	3700		11.0	
										(7.9)	23	32	38	42	46	50	54			
														6900	6800	6900	6900	7000		7200
12.0																			12.0	
13.0																			13.0	
14.0																			14.0	
15.0																			15.0	
15.68																			15.68	

### WINCH RATED CAPACITY

2	FALLS	8700
4	FALLS	17500
6	FALLS	26200
7	FALLS	30600
8	FALLS	35000

### UNITS:

- ANGLES IN DEGREES
- LENGTHS IN METRES
- LOAD IN KILOGRAMS

### KEY:

14200	RC @ ARTIC:	0°	PITCH:	-2.3	ROLL:	-1.0
10300	RC @ ARTIC:	20°	PITCH:	-2.3	ROLL:	-3.0
6900	RC @ ARTIC:	35°	PITCH:	-2.3	ROLL:	-3.5
51	BOOM ANGLE					
(3.1)	RADIUS AT ZERO BOOM ANGLE					

Note: Pitch & Roll angles indicated are representative of lifts based on firm level ground with tyres at specified pressures.



# LOAD CHART

## RATED CAPACITY CHART PICK AND CARRY (0 - 1.44 km/hr) - FALL BLOCK

RAD	BOOM LENGTH TO HEAD SHEAVES - 3rd BOOM RETRACTED														3rd BOOM EXTENDING				RAD
	7.23	7.50	8.00	8.50	9.00	9.50	10.00	10.50	11.00	12.00	13.00	14.00	15.00	16.00	17.00	18.00	19.83		
m	kg	kg	kg	kg	kg	kg	kg	kg	kg	kg	kg	kg	kg	kg	kg	kg	kg	m	
1.0	35000	35000	35000	35000	35000	35000												1.0	
	35000	33300	28500	25000	22300	20100													
2.0	47	49	52	55	57	59												2.0	
	34100	34200	34200	34300	34300	33600	33000	32300	31800										
	30600	27400	23300	20500	18300	16600	15200	14000	13000										
2.5	34	37	42	46	49	52	54	56	58									2.5	
	26800	26900	26900	27000	27000	27000	27100	27100	27100	26300									
	26100	26200	26200	26300	25400	22200	19800	17800	16300	13800									
	24700	24800	21900	19100	17000	15400	14100	13000	12100	10600									
3.0	25	30	36	41	44	47	50	52	55	58								3.0	
	22000	22000	22100	22100	22200	22200	22200	22200	22200	22300	22300								
	21400	21400	21500	21500	21600	21600	19400	17400	15800	13400	11600								
	20200	20200	20300	18200	16000	14400	13200	12200	11300	9900	8800								
3.5	11	20	29	35	39	43	46	49	51	55	58							3.5	
	21200	19300	18600	18600	18700	18700	18700	18800	18800	18800	18800	18800							
	20600	18800	18100	18100	18200	18200	18200	17100	15500	13000	11300	9900							
	19500	17700	17100	17100	15400	13800	12500	11500	10600	9300	8300	7400							
4.0	(3.1)	(3.4)	19	28	34	38	42	45	48	52	56	59						4.0	
			16500	16000	16100	16100	16100	16200	16200	16200	16200	16200	16200						
			16100	15600	15600	15700	15700	15700	15300	12800	11000	9700	8600						
			15200	14700	14800	13300	12000	10900	10100	8800	7800	7000	6400						
5.0	(3.9)		19	27	33	37	41	44	49	53	56	59						5.0	
				14400	12800	12400	12500	12500	12500	12500	12600	12600	12600	12600	12800				
				14000	12400	12100	12100	12100	12200	12200	10600	9300	8200	7400	6800				
				13200	11700	11400	11400	10300	9400	8000	7100	6300	5700	5300	5000				
6.0	(4.4)	(4.9)	18	26	31	36	42	47	51	54	57	59						6.0	
						11400	10300	10000	10100	10100	10200	10200	10200	10200	10300	10400			
						11100	10000	9800	9800	9800	9800	9000	7900	7100	6600	6100			
						10400	9400	9200	9200	7600	6600	5800	5200	4800	4500	4300			
7.0	(5.4)	(5.9)	17	25	34	40	45	49	52	55	58							7.0	
								9300	8500	8400	8400	8400	8400	8500	8600	8700	8900		
								9000	8200	8100	8100	8200	7800	6900	6300	5900	5200		
								8500	7700	7500	6300	5500	4900	4400	4200	4000	3700		
8.0	(6.4)	(6.9)	24	33	39	44	48	51	54	57	59							8.0	
9.0	(7.9)		23	32	38	42	46	50	54									9.0	
10.0	(8.9)		22	31	37	41	45	51	54									10.0	
11.0	(9.9)		21	30	36	40	47											11.0	
12.0	(10.9)		21	29	35	42												12.0	
13.0	(11.9)		20	28	38													13.0	
14.0																		14.0	
15.0																		15.0	
15.68																		15.68	

### WINCH RATED CAPACITY

2	FALLS	8700
4	FALLS	17500
6	FALLS	26200
7	FALLS	30600
8	FALLS	35000

### UNITS:

- ANGLES IN DEGREES
- LENGTHS IN METRES
- LOAD IN KILOGRAMS

### KEY:

12600	RC @ ARTIC:	0°	PITCH:	-2.3	ROLL:	-1.0
9300	RC @ ARTIC:	20°	PITCH:	-2.3	ROLL:	-3.0
6300	RC @ ARTIC:	35°	PITCH:	-2.3	ROLL:	-3.5

51 BOOM ANGLE  
(3.1) RADIUS AT ZERO BOOM ANGLE

Note: Pitch & Roll angles indicated are representative of lifts based on firm level ground with tyres at specified pressures.